

P A R K
grandeura
P a r k l a n d s



Actual Site Photograph



* Not to Scale



- 1. CLUB
- 2. SHOPPING STREET
- 3. SWIMMING POOL
- 4. KIDS POOL
- 5. ROAD
- 6. ENTRANCE PLAZA
- 7. TENNIS COURT
- 8. BADMINTON COURT
- 9. PARKING
- 10. WATERBODY
- 11. LINEAR WATERBODY
- 12. PATHWAY
- 13. FEATURE PAVING
- 14. VOLLEY BALL COURT
- 15. AMPHITHEATRE
- 16. CHILDREN'S PLAY AREA
- 17. PAVILION



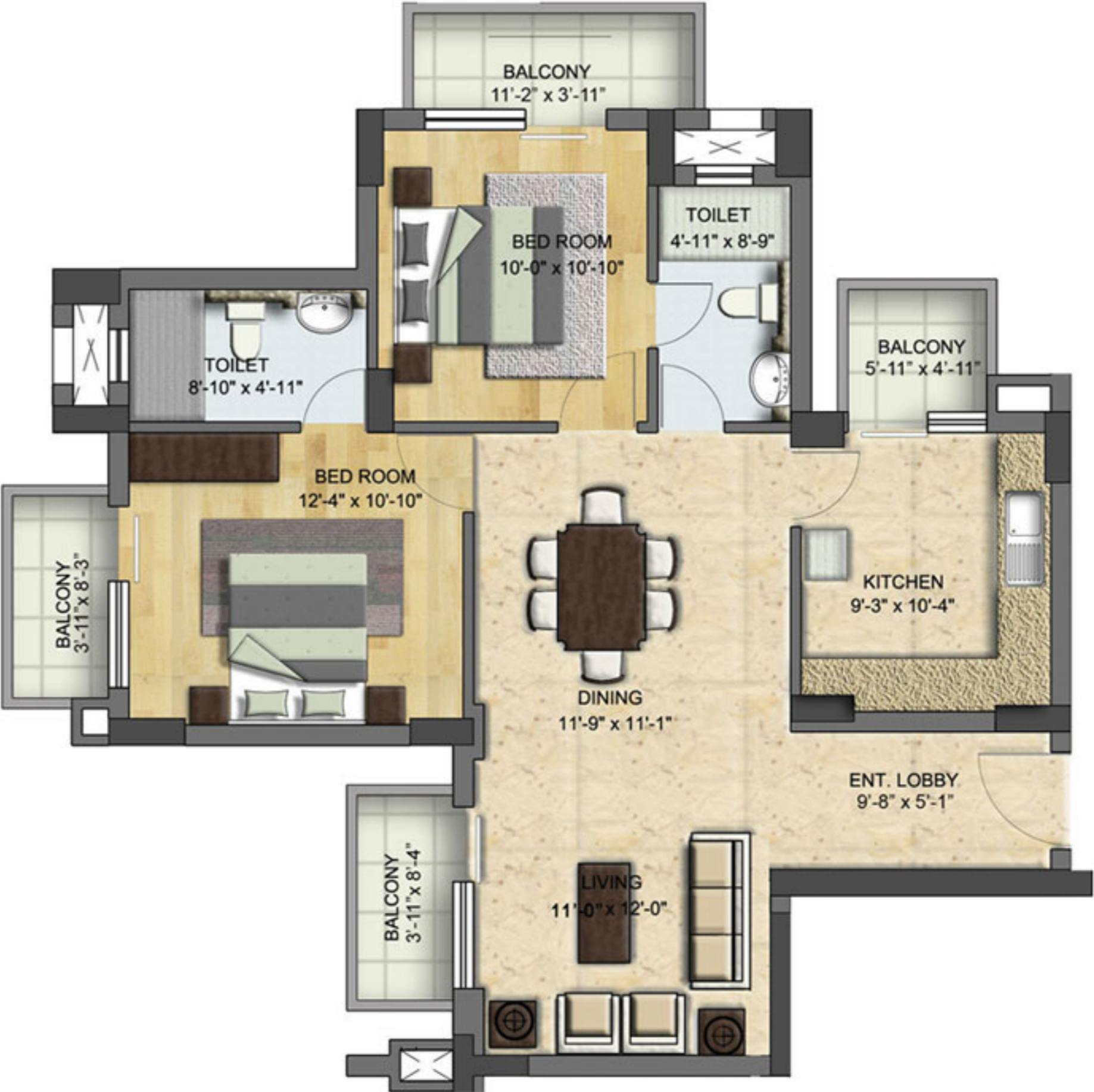
GROUP HOUSING
 FARIDABAD
PARKLANDS

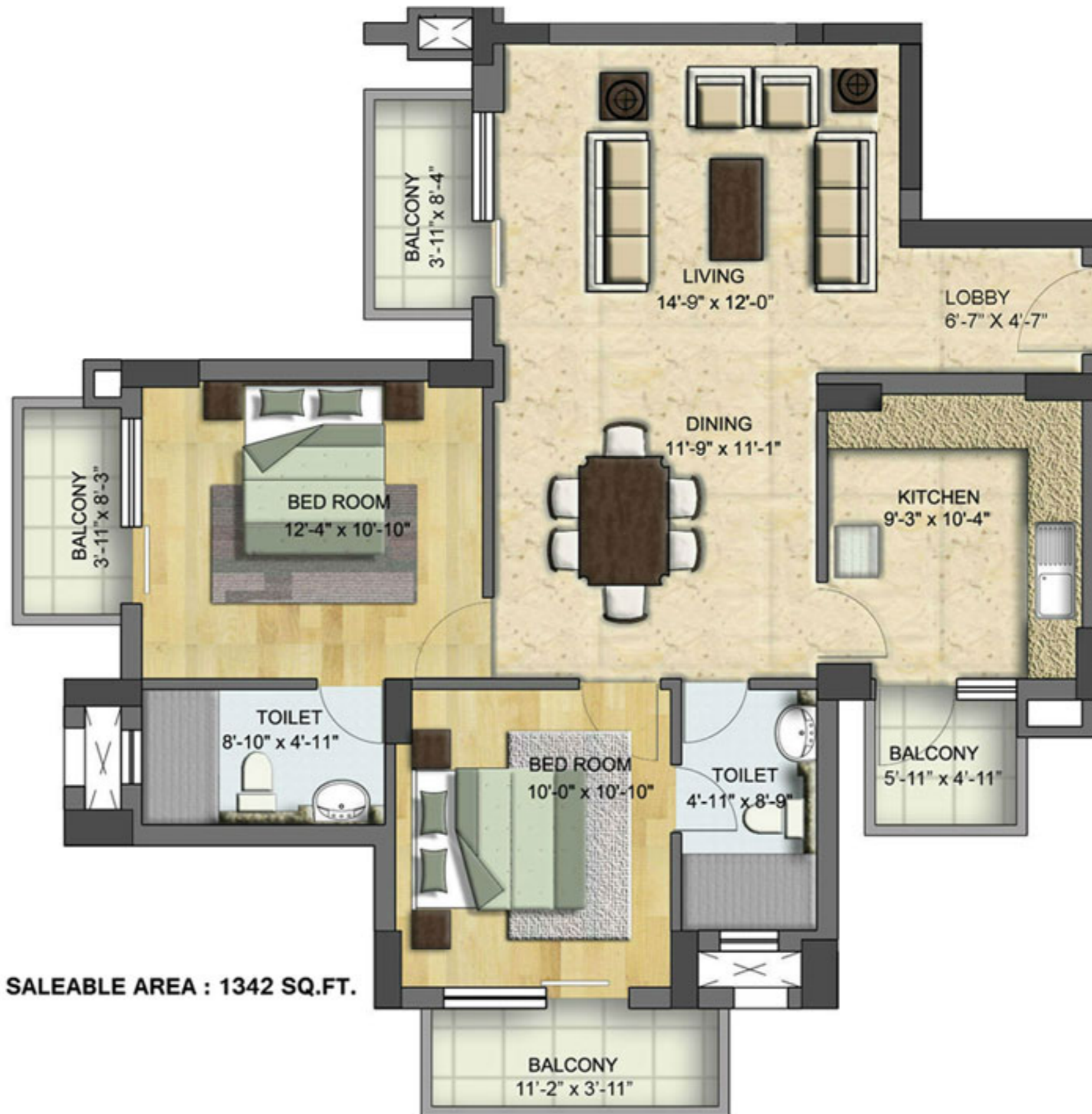
SITE PLAN

The Architects & Developers reserve the right to make modifications for the improvement of the design



SALEABLE AREA : 1325 SQ.FT.

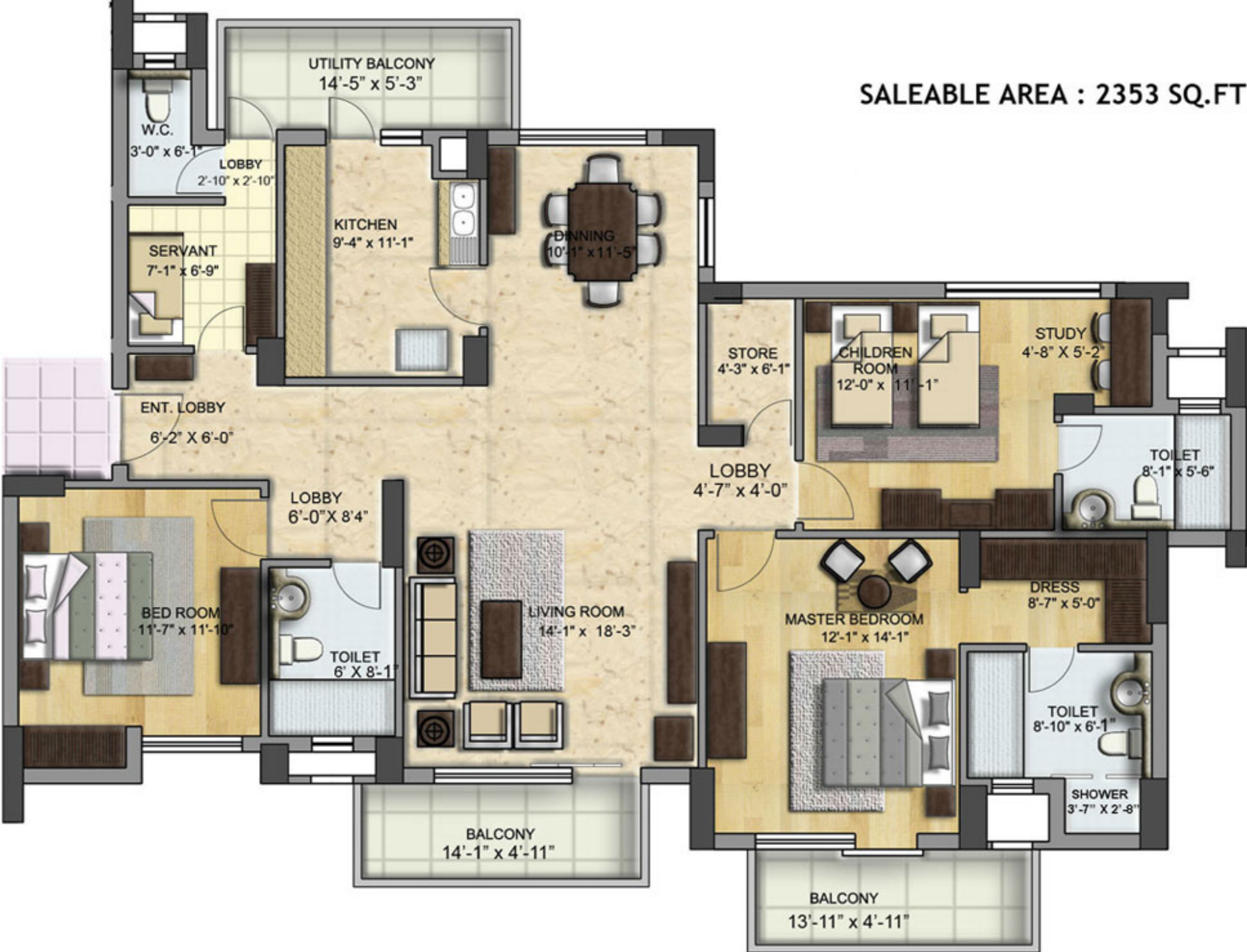




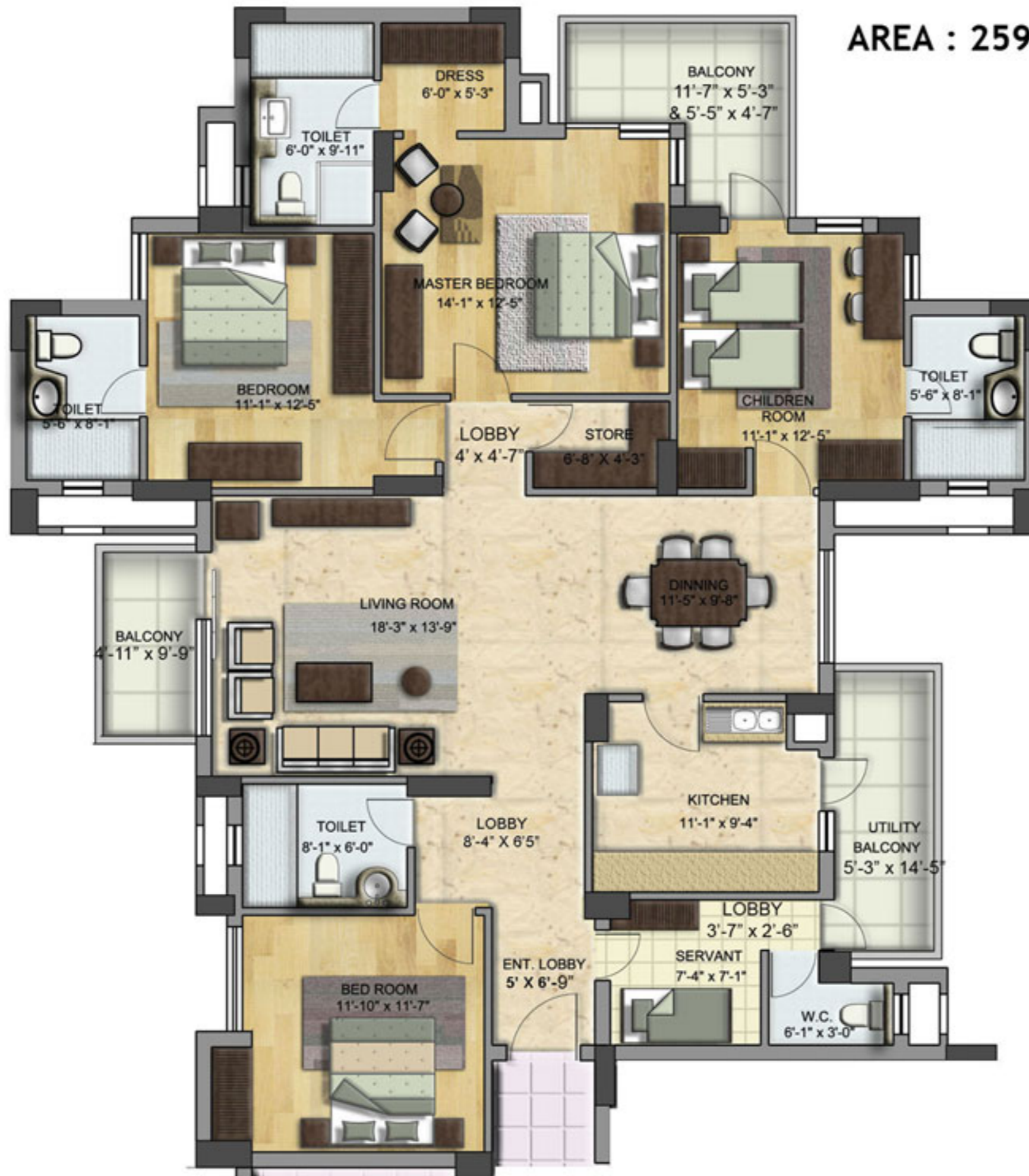
SALEABLE AREA : 2032 SQ.FT.



SALEABLE AREA : 2353 SQ.FT



AREA : 2599 SQ.FT



SALEABLE AREA : 2795 SQ.FT





SALEABLE AREA: 3745 SQ.FT.

SALEABLE AREA : 5110 SQ.FT



SPECIFICATIONS

- **WALL FINISH**

- INTERNAL**

- Living / Dining / Bedrooms - Painted in pleasing shades of acrylic emulsion paint.
 - Servant Room - Painted in oil bound distemper.
 - Lift Lobbies - Selected marble / granite cladding & acrylic emulsion paint.

- EXTERNAL** - Combination of stone & textured paint finish.

- **FLOORING**

- Living / Dining - Vitrified tile with wooden skirting.
 - Bedrooms - Laminated wooden flooring.
 - Servant Room - Ceramic tiles
 - Balcony - Anti-skid ceramic tiles

- **KITCHEN**

- Flooring - Ceramic tiles
 - Dado - Ceramic tiles above working platform, rest acrylic emulsion paint.
 - Platform - Granite counter with double bowl stainless steel sink with drain board & Geysers.

- **TOILETS**

- Dado - Selected ceramic tiles.
 - Flooring - Ceramic tiles / granite / marble
 - Fittings- Granite / marble counter, white sanitary fixtures, single lever CP fittings & Geysers.

- **WINDOWS**

- Powder coated / anodized aluminium glazing.

- **DOORS**

- Seasoned hardwood frames with European style moulded shutters.

- **ELECTRICAL**

- Conduit copper electrical wiring for all light & power points.

- **AIR CONDITIONING**

- Provision of copper conduits and drainage pipes for split air conditioning.

- **FACILITIES**

- 100% power back-up
 - 24x7 security

- **GREEN AREA**

- Fountains
 - Water bodies in the green areas
 - Kids theme parks
 - Jogging and walking tracks
 - Sitting areas

- **BUILDING**

- Sufficient car parking facility per apartment
 - Earthquake resistant RCC framed construction

- **CLUB**

- Swimming Pool
 - Gymnasium
 - Jacuzzi
 - Steam Room
 - Squash Court
 - Tennis Court
 - Indoor Games Room
 - Television Lounge
 - Business Centre
 - Multi-purpose Hall
 - Shopping: Convenient shopping centre